



HermitCrab[®] 2 *with Flow Monitoring*

ETwater[®] HermitCrab[®] 2 with Flow Monitoring

The ETwater HermitCrab 2 with Flow Monitoring upgrades conventional controllers to ETwater Internet-based technology. In 10 minutes or less, this simple box converts many brands of conventional controllers by plugging into the remote control port of your controller. It's the fastest path to an ETwater upgrade for your existing Rain Bird[®], Rain Master[®], Superior[™]/Sterling, Weathermatic[®], Irritrol[®], Toro[®] and Hunter[®] controllers.



HERMITCRAB 2 FEATURES

- **Self-adjusting** weather-based watering schedules.
- **Capacity up to 48 stations.**
- **Weather-proof, vandal resistant** plastic NEMA 4X box and stainless steel hardware for mounting adjacent to existing controller.
- **Back lit LCD display** for viewing HermitCrab 2 operating status and programing selections.
- **Two-way wireless communication** for downloading ET-based schedules, reporting irrigation and site data, and sending alerts.
- **Standard connection for rain sensor.**
- **Made in the USA.**
- **Three (3) year limited warranty** on the ETwater HermitCrab equipment.
- **3G network** provides faster connections.
- **Instant control** and station watering from any device via QuickDraw.

FLOW ATTACHMENT

- **HermitCrab 2 with Flow Monitoring** measures and records flow and alerts on flow events such as a main line breaks, stuck valves, and broken sprinkler detection.
- **Compatible** with most available irrigation flow sensors.
- **Diagnostic LEDs** report on power and flow sensor pulses.

SAVE MONEY

- **Great value: make your conventional controller “smart”** for much less than the cost of a new smart controller.
- **With 20-50% water savings possible,** payback can be just a few months.

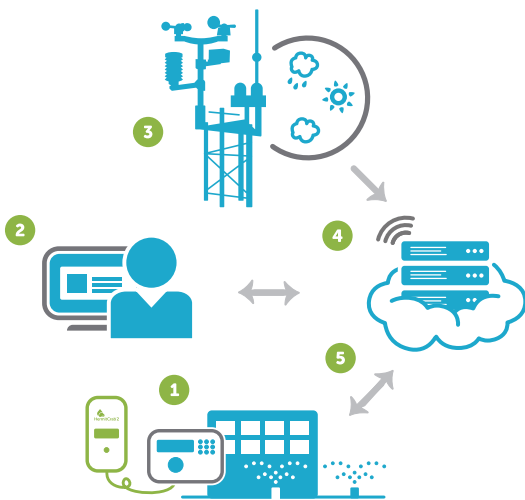
FASTEST INSTALLATION EVER

- **“Plug and Play” installation** in under 10 minutes.
- **Compatible** with most major controller brands.

SAVE LABOR

- **Remote monitoring + management** via the web.
- **Single-platform simplicity** allows management of multiple controllers of various brands at multiple sites – all with the award-winning ETwater web-based system.
- **Includes the most popular labor-saving features** of ETwater Manager[™], including water budgeting and rainfall forecast.
- **Flow Monitoring capability,** with full reporting on learned flow rates per controller and per station.

HOW IT WORKS



1. HermitCrab 2 plugs into a conventional controller through the controller's remote access port, and flow dongle plugs into flow sensor.
2. Use your ETwater Manager™ online management system to set up your account by entering your landscape profiles.
3. A local weather station provides daily weather and rainfall data.
4. ETwater servers access the weather data, compute evapotranspiration, and generate daily watering schedules for each landscape profile.
5. HermitCrab 2 connects wirelessly to the ETwater server to exchange schedules and data. HermitCrab 2 instructs the controller to open and close sprinkler valves according to the custom schedule.

HARDWARE + ELECTRICAL SPECIFICATIONS

- EPA WaterSense approved.
- Dimensions: 7.9"L x 3.9"W x 2.0"D.
- Weight: 2 lb.
- Input voltage 24 VAC provided by host controller.
- In event of power outage, non-volatile memory retains all programming information indefinitely.
- Accepts 3/4" conduit.
- Requires flow sensor.
- For outdoor use, the flow adapter may need to be enclosed in a separate NEMA box.



COMPATIBILITY

The ETwater HermitCrab 2 is compatible with most models of the following brands. Host controller must have a remote control port. See your distributor or visit www.etwater.com for details.

- Hunter®
- Irritrol®
- Rain Bird®
- Toro®
- Rain Master®
- Superior™/Sterling
- Weathermatic®

DISCLAIMER

ET Water Systems, Inc. is neither affiliated with nor endorsed by Hunter Industries, The Rain Bird Corporation, Rain Master Irrigation Systems, Inc., Storm Manufacturing Group, Telsco Industries, or the Toro Company. The warranties of Hunter Industries, The Rain Bird Corporation, Rain Master Irrigation Systems, Inc., Storm Manufacturing Group, Telsco Industries, and the Toro Company do not apply to ETwater HermitCrab products. Rain Bird and Maxicom are trademarks of Rain Bird Corporation.

HOW TO SPECIFY HERMITCRAB 2 WITH FLOW ADAPTER

ETW-HC-2-FA HermitCrab 2 w/flow adapter

Plus, one of the following required host cables:

- ETW-HC-H-CO** HermitCrab host cable for Hunter® host controller (uses 3 wire remote connector)
- ETW-HC-T-CO** HermitCrab host cable for Irritrol® or Toro® host controller (uses RJ11 connector)
- ETW-HC-IR6-CO** HermitCrab host cable for Irritrol® or Superior™ host controller (uses 6 pin remote connector)
- ETW-HC-W-CO** HermitCrab host cable for Weathermatic® host controller (uses RJ11 connector)
- ETW-HC-RB5-CO** HermitCrab host cable for Rain Bird® host controller (uses 5 pin remote connector)
- ETW-HC-RB6-CO** HermitCrab host cable for Rain Bird® host controller (uses 5 pin remote connector)
- ETW-HC-RM-CO** HermitCrab with cable for Rain Master® host controller (uses 9 pin D type male remote connector)

©2013 ET Water Systems, Inc. All Rights Reserved.
ETWATER MANAGER is a trademark and ETWATER, QUICKDRAW, and HERMITCRAB are registered trademarks of ET Water Systems, Inc. ETWater Systems products and technology are protected by U.S. Pat. No. 7,596,429 and patents pending.
Document: HermitCrab 2 v1 10/13